

Classic Series - Proportional Control (LE-LC)

Classic series, produce clean hygienic steam for humidifying the environment of people in offices and domestic dwellings. Environments required for the preservation and exhibition of Works of art, manuscripts and items of antiquity. They are also used in production processes, laboratories and for the elimination of any static problems. To give greater flexibility where cost is an issue, Vapac have increased the range of basic units from 2 - 4Kg/h, to 5 - 55Kg/h. This has been achieved without compromise on Quality or reliability, by offering units with an uncomplicated approach to design and without many of the standard extras that may not be required, while retaining those that are

Standard Features

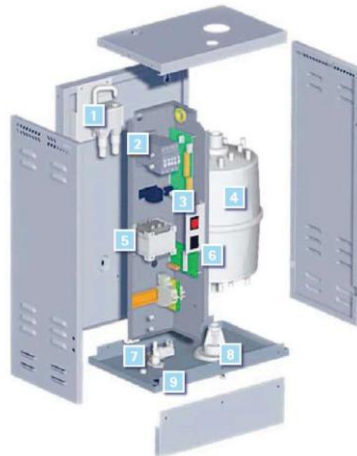
- Lift off front cover, for easy
- Access for service and maintenance
- Robust construction
- Duct pressure up to 1000 Pascal
- Led Status
- Drainage Pump
- Water level control

Optional Accessories

- High pressure duct kit (2000Pa)
- Network communication card
- Room distribution unit (RDU)
- Operation/Fault relay (voltage-free signal)
- Network update

Operating limits	
Ambient temperature	5 - 35 °C
Water temperature	1° to 30°C
Duct pressure	-600 -2000Pa

Water supply	
Conductivity	80-1000 µS
PH	7.3 - 8.0
Silica	he
Water pressure	1 - 8 Bar
Hardness	50-500ppm



1. Tundish
2. Contactor
3. Status signal
4. Cylinder
5. Transformer
6. On/off drain
7. Solenoid valve
8. Drain pump
9. Drip tray

Capacities, Electrical Information, Dimensions and Weights

On/Off and proportional control (20-100%)							
Code		40111305	40111309	40111318	40111330	40111345	40111355
Model		LE05LC	LE09LC	LE18LC	LE30LC	LE45LC	LE55LC
Capacity	kg/hour	1-5	1.8-9	3.6-18	6-30	9-45	11-55
Number of cylinders							
Steam pipe	Mm	35	35	35	54	54	54
Voltage	V	200/440	380/440				
Electrical supply		Phase+N or 2 Phase	3 Phase				
Mak. Electric Power	Kw	3.7	6.8	13.5	22.5	33.8	41.3
All load current (for each phase)	Ampere	9/ 19.5	16/35.5	18.5/40.5	31/68	46/99	57/66
Altitude	Mm	674	674	674	811	811	811
Width	Mm	430	430	430	521	521	521
Depth	Mm	280	280	280	375	375	375
Weight (Dry)	Kg	34	36	39	40	45	45
Weight (Juicy)	Kg	48	50	66	66	72	72